

**Bryn Mawr Presbyterian Church
420 Cedar Lake Road, Minneapolis,
MN 55405**

August/September 2012 Newsletter

A Minster's Musings

It's back to school time. Of course not everyone is headed back to school or has someone in the family headed back to the classroom, but in many respects it's the new year. We have a momentous back to school at our house as we send our oldest off to college. She is moving 1200 miles away to attend school with strangers; okay she knows two or three people. Soon she will have met her roommates and gone on a hiking trip and experienced orientation and started classes and her world will have exploded with new people, new connections.

This summer my niece needed inexpensive housing for an unpaid internship in Chicago. Several years ago I met an artist named Shauna Bowman at a conference in the Twin Cities. I knew she was a candidate for ministry in the PCUSA. She returned to Minneapolis for General Assembly where she created art during the opening worship service. As a result we became friends on Facebook. So I sent her a message about my niece and her need for housing. The result was an amazing opportunity for my niece to experience living in community with a group of seminarians, pastors and artists on the Northwest side of Chicago. They live in two different houses, share a garden and compost, help each other with child care and are required to eat a certain number of meals together each week as a community. Not only did she get affordable housing, she experienced communal living and made friends with a group of people that she otherwise might not have had the opportunity to meet. We never know where the connections we make will take us.

It seems that BMPC is really about connections. The connections we make with each other are vitally important and often deep friendships form between our members. Sometimes the connections we make are fleeting and we have only a brief opportunity to say hello, exchange names and invite someone to have a cup of coffee after worship. In July the Session met for an overnight retreat to talk about what we value about this community and where we see opportunities to strengthen and enrich our life together. Connection with children and youth was

lifted up as a priority, finding ways to nurture and support the youngest members of our community. We also expressed a desire for more opportunities for small groups of people to gather around areas of interest or concern, more opportunities for deeper connections.

The Presbyterians have long referred to themselves as a connectional church, primarily because of our connection to other congregations and governing bodies. Increasingly we are called to be a connectional church by having a presence, offering activities that have no particular agenda other than making connections with other people. As I send my own daughter off to college I keep offering advice, and I'm trying to take some of it to heart. Be open to meeting as many people as possible. Build positive relationships with others. It's not a selfish endeavor; it creates community and that's a good thing. And God is surely present in the midst of it, whether here or 1200 miles from here.

Peace to you,
Jamie

Friendship Sunday Picnic/Potluck
September 9

Fall is nearly here and that means Friendship Sunday picnic/potluck time!

Immediately after worship, we will gather on the front lawn for a fun time of fellowship, food, and fall weather. If it rains, we will gather in the downstairs dining room.

Plan to stay after church for:

Burgers and Brats and drinks (provided by the Deacons)

You bring:

A dish to share - we encourage salads and other hearty sides especially

A blanket or camp chairs

A friend!

See you there!

Grounds committee update

We have been blessed with a beautiful location situated within the "heart" of Bryn Mawr and we believe we have both a responsibility and an opportunity to create a beautiful centerpiece to this setting.

The upgrades to the exterior and open spaces do just that. The Rain Garden is a beautiful addition to the triangle and the new sod is holding up well. The challenge is to find a happy balance between maintaining an attractive and inviting green space in a positive and environmentally sound manner.

With that in mind, once the spring took hold and the grasses and their unwanted cousins "the weeds" started sprouting our objective was simple: establish a plan that would maintain the wanted grasses (primarily from the new sod that was laid after the remodeling was completed) and address the established weed population before it too overwhelmed the new sod.

An ad was placed in the "Bryn Mawr Bugle" and led us to a Minneapolis based small lawn care business owner who every Friday (weather permitting) grooms the lawn. I have asked to have the clippings bagged (for this season) until we have the weed population under control (since true eradication is not possible).

The heat of June and July kept us from immediately contracting a weed control contractor as the application of fertilizer would require us to regularly water our lawn adding to the overall expense to lawn care. Instead, we took a delayed approach and waited for the heat to break.

In early August the extended heat wave did break and we contracted an organic based, medium sized organization to begin to address the soil acidity and growing weed population. They began their work in early August and will continue to recondition both our soil and rehabilitate the balance of our lawn until the end of the season. The organic based weed control agent is both animal and kid friendly. The season will end with a robust re-seeding effort that will pick up again in the spring.

If our efforts bear fruit (in this case more grass) we will provide both the neighborhood and the BMPC community with an even more robust and flourishing green space in 2013.

Through the use of rain garden vouchers donated by a member, BMPC has received a grant of \$1,000 from the BMNA to offset the cost of building the rain garden.

If you'd like to help us get the grounds ready for next season, please join us on Saturday, September 29 at 9:00 for our next workday - we will be spreading mulch in the garden beds. More details to follow in September.

Richard Bauer and Karin Ciano

Nursery Update

We are pleased to welcome our new nursery attendant to our church. Melissa Kirselsbom started working in the Nursery in August and is enjoying getting to know the children and families at Bryn Mawr Church. Please introduce yourself this fall and stop in the Nursery to say hello.

The number of young children who are using the Nursery has been increasing! We will need an additional person to support Melissa in the Nursery on busier days. Please consider helping out during the church service. A sign-up sheet is located on the bulletin board. Thanks for considering to help with the young ones.

Stephanie Bell

Adult Ed

Please join us on Friendship Sunday, Sept 9 for an 8 week discussion of Thich Nhat Hanh's book Living Buddha Living Christ, an exploration of the spirit of God that lived within both Buddha and Christ and how that continues to live within us as we practice our faith. As Thich Nhat Hanh says repeatedly, "It is not about devotion, it is about practice." Eleven books have been ordered and more can if needed. Come join us whether you can make 2 sessions or all 8, whether you can read the entire book or just want to listen to the discussion.

Peacemaking Offering

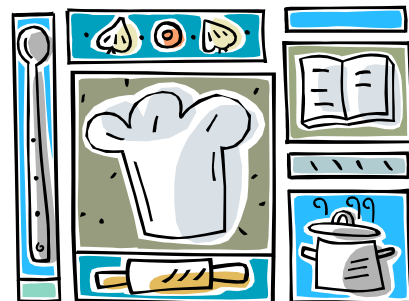
Once again we'll take a special Peacemaking Offering on the first Sunday of October. Part of the money will go to the Presbyterian Church's national and international peacemaking efforts, but each year we also donate a portion to an organization with local ties. Do you have suggestions for an organization that we should designate as this year's local recipient—a group that is doing something to further the cause of peace in our own community? Please let the Mission Possible team know by contacting Lisa at LB@lisabullard.com.

Thank You for Giving Generously!

Thanks to your generous response and God's grace, we were able to raise substantial amounts for our spring Mission giving opportunities. A special thank-you to everyone who supported our March food drive by donating food or money, by offering prayer support, or by making special efforts to gain a greater understanding of the complex problem of hunger. Because of your support, we were able to donate \$929 in cash, and much more in food items, to PRISM food shelf. We also collected an amazing \$3,671.37 for this year's One Great Hour of Sharing! This will provide much-needed funding for programs that fight hunger, provide disaster assistance, and support self-development of people programs around the world. Thank you to all the generous donors and bidders for the Silent Auction, as well as to all those who made other donations or who turned in a fish bank.

A Reason to Celebrate!

This year we celebrate an exciting ten-year anniversary: for the last decade, Bryn Mawr Church's Mission Possible team has supported a literacy initiative at St. Anne's Place, the north Minneapolis homeless shelter for women with children.



Once a month, volunteers from church bring Sunday supper and books to St. Anne's. The volunteers read to the children and help the kids and moms each select their own book to keep. It is enormously satisfying to see the excitement that both the kids and the moms show for the books, and sometimes the process of choosing just one is tough indeed! We always welcome new volunteers, and carpooling is possible if you'd like to ride along just to see what it's like. If you're interested, contact Lisa at LB@lisabullard.com.

Support Our Neighborhood Schools

This year the Mission Possible team plans to expand our support of our neighborhood schools. The schools and many of the students who attend face continuing challenges, and we've begun a dialogue with educators and parents to identify ways the church can help. We'll continue to let you know about opportunities as they arise; we anticipate we'll be sharing requests for volunteers and for special giving opportunities. Watch your bulletins and emails for regular updates, and if you'd like to play a more direct role in helping to plan our School Support initiatives, please contact Lisa at LB@lisabullard.com.



News from the director of The Cedar Lake Seven:

We've been busy this summer recording our 5th album! Andy Bell once again has taken the responsibility of sound engineering and already has put 8 songs "in the can" for us. Like our last album, we have a lot of help from our friends. Bryn Mawr of course abounds with musical talent and the usual suspect will appear on the album.

Over the years we've utilized our band more and more. We still think of ourselves as an acappella choir, but during our concerts the band plays about 2/3 of the show. The new album reflects that musical shift.

As a kid in northeastern Indiana on a Sunday evening, I had two options if didn't want to watch 60 Minutes with my parents, and both were on the dial of my Philco transistor radio. The choice was between WJR 760 AM with Ernie Harwell calling the ballgames for the Detroit Tigers, or I could listen to one of the many broadcast Evangelical church services. Since the 1975 Tigers went 57-102 and finished last place in the American League, 37 1/2 games behind the Boston Red Sox, "The Golden Voice of the Great Lakes" called the team a bitter disappointment and a crying shame. So I listened to church, the Gospel Temple in Fort Wayne on WOWO 1190 AM 50,000 watts, to be exact.

Our new album is entitled *Turn Your Radio On* and features the gospel style and emotion of the revival radio shows of my memory. The recording sessions have been exciting and fun and spirit-filled. We plan to release it in November. Just in time for Christmas of course. And as always, a great stocking stuffer for the whole family.

thanks ... Greg

Splish Splash, We Got a New Bath! An invitation from St Anne's Place

Join us for an open house at St. Anne's Place celebrating our new Family Bathtub Suites, made possible by the generous gift made by Bryn Mawr Presbyterian Church.

-Monday
September 17
4:30pm-6pm

-Refreshments
will be served
-Indoor tours
of the bathroom



St. Anne's Place
2634 Russell Ave N
Minneapolis, Minnesota 55411
For more information email
juliannajanssen@stannesplace.org

Important Dates

September 5 6:00-7:00 p.m.	Sunday School Open House
September 9 th 9:30 a.m. 9:30 a.m.	Friendship Sunday Sunday School Begins Adult Ed Begins
September 17 4:30-6:00p.m.	Open House, St Anne's Place

Bryn Mawr Presbyterian Church Sunday School Open House!

Come one, come all ... It's almost time for Sunday School!

Open house: Wednesday, September 5th @ 6 -7 pm

Sunday School: Sunday mornings @ 9:30-10:30

Beginning Sept 9

Please stop by **Bryn Mawr Presbyterian Church** on

Wednesday, September 5th between 6 – 7pm

to learn more about our Sunday School program.

All friends and neighbors are invited to join us for dinner and an introduction to the *new* Sunday School program at BMPC.

The program includes something for everyone:

ART, TECHNOLOGY, SCIENCE, DRAMA, MUSIC & MORE

Kids in kindergarten and up are welcome to participate.

For more information call 612.377.5222
or visit us online at www.brynmawrchurch.org

SEE YOU THERE!